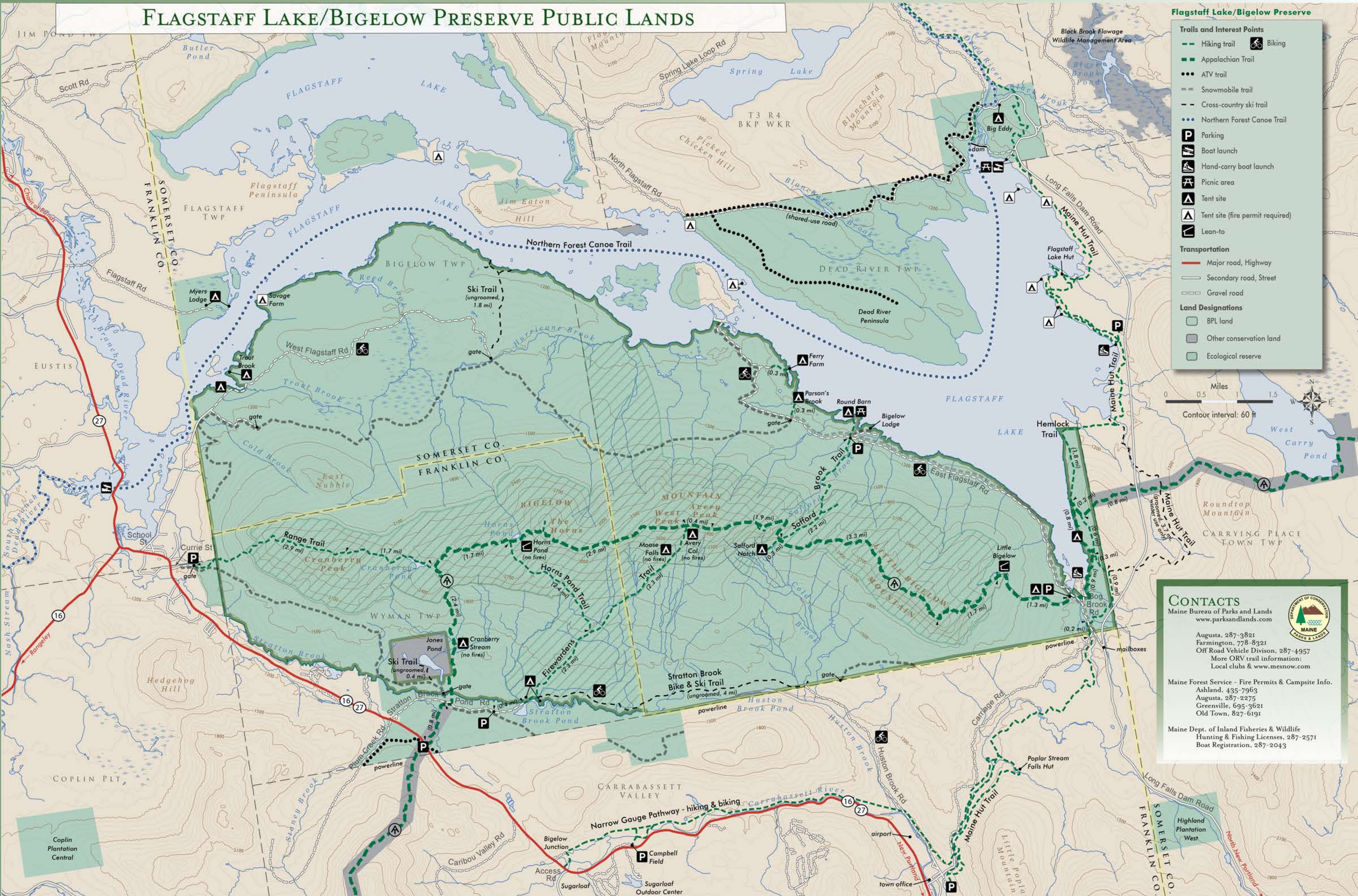


FLAGSTAFF LAKE/BIGELOW PRESERVE PUBLIC LANDS

Flagstaff Lake/Bigelow Preserve



Trails and Interest Points

- Hiking trail
- Appalachian Trail
- ATV trail
- Snowmobile trail
- Cross-country ski trail
- Northern Forest Canoe Trail
- Parking
- Boat launch
- Hand-carry boat launch
- Picnic area
- Tent site
- Tent site (fire permit required)
- Lean-to

Transportation

- Major road, Highway
- Secondary road, Street
- Gravel road

Land Designations

- BPL land
- Other conservation land
- Ecological reserve



CONTACTS

Maine Bureau of Parks and Lands
www.parksandlands.com

Augusta, 287-3821
Farmington, 778-8321
Off Road Vehicle Division, 287-4957
More ORV trail information:
Local clubs & www.mesnow.com

Maine Forest Service - Fire Permits & Campsite Info.
Ashland, 435-7963
Augusta, 287-2275
Greenville, 695-3621
Old Town, 827-6191

Maine Dept. of Inland Fisheries & Wildlife
Hunting & Fishing Licenses, 287-2571
Boat Registration, 287-2043

OVERVIEW Located in western Maine just east of the village of Stratton, about 40 miles north of Farmington, Bigelow Preserve includes over 36,000 acres of public land. The preserve encompasses the entire Bigelow Range, which includes seven summits. The highest of these at 4,150 feet is West Peak, one of only 10 Maine summits over 4,000 feet in elevation. Bounded on the north by 20,000-acre Flagstaff Lake, the preserve offers many opportunities for outdoor recreation.

HIKING Hikers can choose from many one-day or multi-day hikes on 30 miles of the white-blazed Appalachian Trail and the blue-blazed side trails. A popular, though strenuous, day-hiking loop runs via the Fire Warden's Trail, Appalachian Trail, and Horns Pond Trail for a total of 12.3 miles. PLEASE NOTE these rules on trails managed by the Maine Appalachian Trail Club (MATC) and high elevation campsites: GROUP SIZE LIMIT Day Use Trails = 25; Overnight Use = 10

BIKING ON DESIGNATED TRAILS ONLY:

- East Flagstaff Road
- West Flagstaff Road
- Stratton Brook Trail
- Stratton Brook Pond Road

Additional biking information:
<http://carrabassett.nemba.org/trail-maps/>

CAMPING Backpackers will find campsites at Cranberry Stream, the Horns Pond Lean-to, Moose Falls, Avery Col, Safford Notch, and the Little Bigelow Lean-to. NOTE: Fires are authorized and require no permits only at the maintained fire rings at the Safford Notch and Little Bigelow sites. Fires are not allowed at the Cranberry Stream, Horns Pond, Moose Falls and Avery Col sites.

Fires at permit campsites require a permit from the Maine Forest Service (207) 287-2275.

VISITOR RULES To ensure a safe and pleasant experience for yourself and others, please follow these rules:

FIRES Kindle fires only at maintained fire rings - see map for fire designation of each campsite. Cut no live vegetation; no chainsaws or power equipment allowed.

PETS Keep pets on a leash (length of 4-feet or less) at campsites and under control at all times.

TRASH Carry out all trash. Do not leave personal property unattended for more than 3 days or Bureau may take into custody.

FIREARMS Do not discharge firearms within 300 feet of campsites, marked hiking trails, or boat launches. Loaded firearms are not permitted at campsites or on hiking trails.

ATVs Only permitted on the Dead River Peninsula, and off of Route 16/27 - see map.

LIMIT OF STAY 14 days in a 45-day period; PLEASE NOTE - at high elevation & MATC managed sites = 3 nights; group size 10 or less

Map: Center for Community GIS (www.community-gis.org)